



Sappada & Forni Avoltri  
**MASTER  
WORLD CUP**

29 January • 06 february  
2026




WORLD MASTER  
CROSS-COUNTRY SKI  
**SAPPADA • FORNI AVOLTRI**  
**2026**



REGIONE AUTONOMA  
FRIULI VENEZIA GIULIA

IO SONO  
FRIULI  
VENEZIA  
GIULIA

# 2026



It's composed by local administration of Sappada, Forni Avoltri, the **Consorzio** Sappada Dolomiti Turismo, and **Friuli Venezia Giulia Region**.

**Presidente:** Silvio Fauner  
mail [info@silviofauner.com](mailto:info@silviofauner.com) • tel. +39 331.3741216  
**Vice President:** Pietro Pillar Cottler  
**Race Director:** Marco Mappelli  
**Accommodation Manager, Fund Raising & Press Office:** Monica Bertarelli  
**Track Director:** Aldo Fauner  
**Stadium manager Sappada:** Nicola Selenati  
**Stadium manager Forni Avoltri:** Primo Del Fabbro  
**Secretary:** Marianna Sartor

## ORGANIZING COMMITTEE

provisial program

JANUARY / 01

S	M	T	W	T	F	S	
	11	12	13	14	15	16	17
18	19	20	21	22	23	24	25
26	27	28	29	30	31		

FEBRUARY / 02

S	M	T	W	T	F	S
1	2	3	4	5	6	7
8	9	10	11	12	13	14

- **Thursday 29th. january**  
Arrival • Training • Accreditation
- **Friday 30th. january**  
Arrival • Training • Accreditation • Opening Ceremony
- **Saturday 31th. january**  
Race Day - middle distance  
a.m. CT • p.m. FT • Award Ceremony
- **Sunday 01st. january**  
Race Day - short distance  
a.m. CT • p.m. FT • Award Ceremony
- **Monday 02nd. february**  
Free day, with the possibility of a colutral visit to Venice or Trieste
- **Tuesday 03rd. february**  
Race Day - relay  
Award Ceremony
- **Wednesday 4th. february**  
Race Day - long distance  
a.m. FT • p.m. Award Ceremony
- **Thursday 5th. february**  
Race Day - long distance  
a.m. CT • Award Ceremony • Banquet /Closing ceremony
- **Friday 6th. february**  
Departure Day
- **Friday 6th. february**  
Opening Ceremony Olympic Games

This is the program related to the Sappada meeting: we will try to make you grasp all the aspects pertaining to the holding of the Masters in our locality: from the track, to the accommodations, from the logistics to the quality of our culinary offerings. In the hope that everything will be to your liking



# PICK UP SERVICE

Sappada • Forni Avoltri

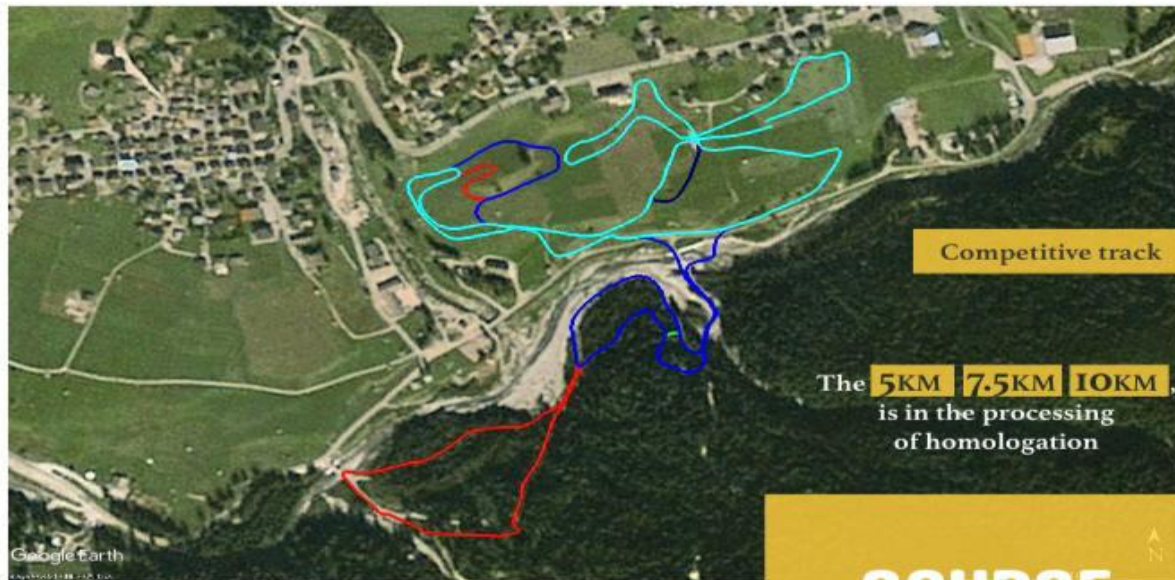
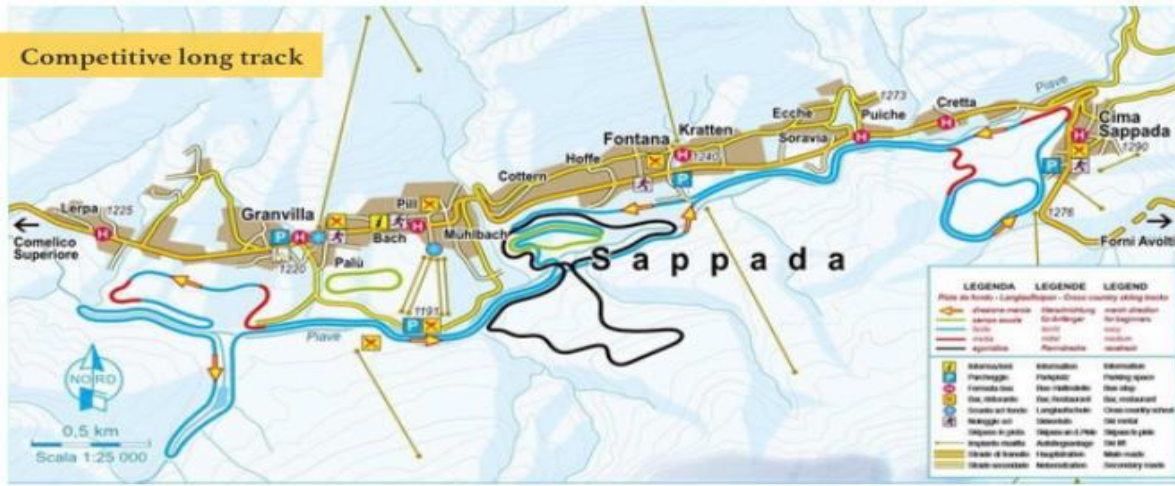


To make mobility easier during the stay of our guests, a **free pick up service** will be set up to allow athletes and their companions to reach the competition field from their hotel whether they are staying in Sappada or Forni Avoltri.

- 1 BORGIO AL SOLE
- 2 CHURCH SANTA -MARGHERITA
- 3 CITY HALL
- 4 BAR ALPINO
- 5 FONTANA SQUARE
- 6 CIMA SAPPADA
- 7 FORNI AVOLTRI

Here you will find the description regarding transportation that will be activated to make transfers easy for our athletes and guests both to Sappada and to and from Forni Avoltri and vice versa. Our valley is about 5 km long and 8 km from Forni Avoltri. Transfers therefore will be very fast.

## Competitive long track



The Sappada **ski stadium** is located in the middle of the town, capable of holding thousands of athletes and spectators. This ski stadium, over the years has hosted two editions of World Cup competitions and several editions of National Championships.

In **2023** the Sappada ski stadium hosted the **EYOF, European Youth Olympic Winter Festival**.

This is the Sappada cross-country trail. A historic track that has hosted numerous world-class events. It is adjacent to the inhabited area and is easily reached from the village.



## Race track

5 km Track

Completion of 7,5 km

Completion of 10 km

The cross-country track will be arranged to be appropriate for different levels of difficulty. Three levels are planned, congruent with the categories of participants.





WORLD MASTER  
CROSS-COUNTRY SKI  
**SAPPADA • FORNI AVOLTRI**  
**2026**







The Forni Avoltri ski stadium is located 2 km from the town and 4 km from Sappada, capable of holding thousands of athletes and spectators.

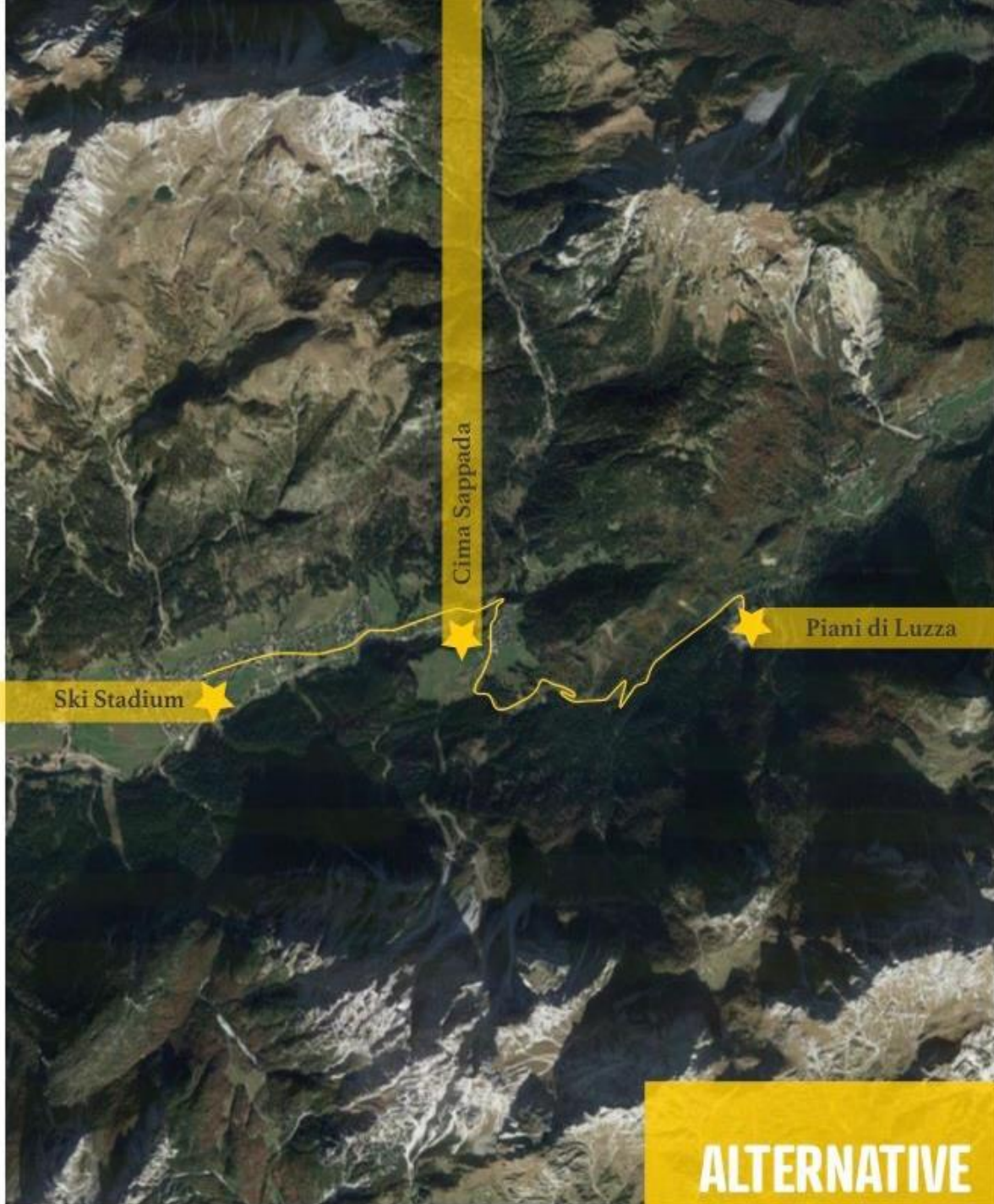
This **ski stadium**, over the years has hosted two editions of **European Cup** competitions and **Junior World Champion** several editions of **National Championships**.

In **2023** the Sappada ski stadium hosted the **EYOF, European Youth Olympic Winter Festival**.



This is the cross-country track in Forni Avoltri that will be used for the relays.





Two cross-country trails, one in the village of Cima Sappada and the other in Forni Avoltri, will be available to give our athletes a chance to train



# PROSPECT

Thanks to the altitudes and the convergence of winds and currents, both Sappada and Forni Avoltri, by virtue of the rigid winter temperatures, already in December offer the opportunity to practice skiing. And this weather condition lasts until the month of April.

snow precipitations



In this diagram you can assess the snow situation in Sappada from 2010 to 2023. As you can see altitude and convergence of winds have always guaranteed snow.



## ACCOMMODATION

### prices

Our structures offer **4000 beds**, divided by type of structure:

**Hotel • Residence** ★★★★★ & ★★★★★  
**Apartments**

The Prices vary depending on the treatment (b&b, hb and fb) and the structure (\*\* or \*\*\*) - per person

#### Hotels

€ 84 b&b ★★ • € 104 b&b ★★★  
€ 110 hb ★★ • € 130 hb ★★★  
€ 138 fb ★★ • € 158 fb ★★★

#### Apartment • Residence

★★★ € 55 per person  
★★★★ € 75 per person



All hotel and apartment reservations will have to go through our tourist office to enable proper distribution of our guests in the area. The email reference is [info@sappadadolomiti.com](mailto:info@sappadadolomiti.com). We ask that the subject line of the email include “Master Reservation 2026”



Our structures offer **4000 beds**, divided by type of structure:

**Hotel • Residence** ★★★★★ & ★★★★★

**Appartments**

The Prices vary depending on the treatment (b&b, hb and fb) and the structure (\*\*\*) - per person

**Hotels**

€ 84 b&b ★★★★★ • € 104 b&b ★★★★★

€ 110 hb ★★★★★ • € 130 hb ★★★★★

€ 138 fb ★★★★★ • € 158 fb ★★★★★

**Apartment • Residence**

★★★★ € 55 per person

★★★★★ € 75 per person



WORLD MASTER  
CROSS-COUNTRY SKI  
**SAPPADA • FORNI AVOLTRI**  
**2026**

These are the indications of rates  
at our facilities